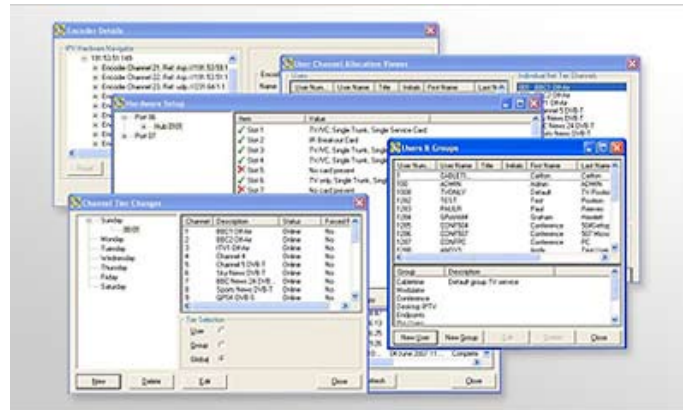


TV over Cat-5/UTP

➤ 463 SIPI Option with Controller Module and PC Channel Change Application

SIPI is an 'open' standard interface that allows third party applications to control various functions of the MediaStar Pro and Evolution systems. The SIPI server is a software process that runs on the MediaStar System Controller. It is available only when the system has the appropriate license dongle entitlements. Control messages are sent from a third party control device (the client) to the SIPI server. The SIPI server receives and checks the messages and then issues appropriate internal instructions to the MediaStar Pro or Evolution systems. Once a command has been processed it returns appropriate messages to the client. The client is typically a software application running on a PC or a Crestron or similar control system. All control messages and responses are transmitted using a LAN based IPTCP communications link.



Companion Models & Accessories:

- 463/5 - 5 User License
- 463/10 - 10 User License
- 463/20 - 20 User License
- 463/50 - 50 User License
- 463/100 - 100 User License
- 464 - MediaStar Pro SNMP system monitoring application
- 466/UG - MediaStar Pro Controller upgrade/
replacement Security Dongle

➤ Head Office

Cabletime Ltd, 64 Greenham Road, Newbury, Berkshire, United Kingdom RG14 7HX
T: +44 1635 35111 **E:** sales@cabletime.com www.cabletime.com

USA Office

Cabletime USA **T:** 973 288 8010 **E:** usa@cabletime.com

Asia Office

Cabletime ASIA **T:** +852 3101 2650 **E:** asia@cabletime.com

Brought to you by

CABLETIME[®]